



Delivery Services, Transportation
Southern Region, Calgary District
803 Manning Road Ne
Calgary, Alberta T2E 7M8

Permit No.: RSDP037670
File Number: 2021 Rocky Mountain Rally

September 15, 2021

Rocky Mountain Rally

Email: keith@morison.ca

Attention Rocky Mountain Rally

Subject: Special Event Approval

Regarding application for the following:

SPECIAL EVENT - Rocky Mountain Rally - October 2, 2021

Permit / File Number	Description	Location
RSDP037670-1 Special Event	SPECIAL EVENT - Rocky Mountain Rally - October 2, 2021	Highway Powderface Trail/Jumpingpound

Please accept this letter as Alberta Transportation's approval to use portions the above noted highways for the above noted event. You must also obtain permission from all affected municipalities for use of their roadways. Please inform the local R.C.M.P. of your schedule.

This event should be conducted in a manner that will not create any hazard to either the participants or the motoring public. If cyclists are involved, they must follow the rules of the road when riding along the highways. Only peace officers or certified flag persons shall direct or attempt to control traffic. Support vehicles must maintain the normal highway speed if any part of the vehicle is crossing the white shoulder line into the driving lane. Proper warning signs should be placed in advance to advise motorist of cyclists along the highway. The signs are to be removed following the completion or suspension of the event.

All rules and regulations must be followed as outlined in the Alberta Infrastructure & Transportation Special Events Guide at:

http://www.transportation.alberta.ca/Content/docType233/Production/SPECIAL_EVENTS-revised-2007-INTERNET.pdf

Approval of the event is based on the provided information. Should any changes of the submitted plans occur, approval from the department is required. Please ensure that all appropriate Provincial and Federal Acts and Regulations are adhered to regarding this event. You are responsible for obtaining all necessary

permits. The Department will not assume any responsibility for any incidents that may occur on the highway during, or as a result of, the event. Due care must be exercised.

Prior to commencement of your event, please consult Alberta Transportation's online road reports at <http://511.alberta.ca> for any road construction or other activities that may affect the event.

The Department wishes your organization a successful and safe event.

Yours truly,

Ivan Sawtell
Field Support Technologist
ivan.sawtell@gov.ab.ca

cc: Alberta Transportation
perry.roberts@gov.ab.ca
paul.prout@gov.ab.ca
Public Lands
Mike.thompson@gov.ab.ca
Kananaskis Improvement District
info@kananaskisid.ca



2021 Rocky Mountain Rally

October 2, 2021

Safety Plan

Event Overview

The 47th annual Rocky Mountain Rally is the first round of the 2021 Canadian Rally Championship, sanctioned and insured through the Canadian Association of RallySport, and organised by the not-for-profit Calgary Sports Car club.

As a performance rally, the event sees teams drive in safety prepared rally cars one minute apart on closed roads to see who can complete the course in the shortest time.

Event activities start on Friday as the teams travel the route, on open roads, making pace notes of the route that they will use during competition. Competition cars are also inspected for rules compliance for both competition class and safety equipment.

This year's Rocky is based in Cochrane, AB, using Powderface Trail and the Jumpingpound Demonstration Forest loop in Kananaskis Country. Saturday's competition will run from 8am through 8 pm. There will be several opportunities through the day to allow passage of other users through the roads.

This year's Rocky is expected to attract between 30 and 35 teams from across Canada, although the majority of entrants will be from Alberta. The event is also supported by approximately 90 volunteers from Alberta and BC.

Event Officials

Organizer/Coordinator	Keith Morison	403-510-5689	Keith@Morison.ca
Clerk of the Course	Keith Morison	403-510-5689	Keith@Morison.ca
Deputy CoC	Josh Keatley	403-921-3846	Josh@Keatley.ca
Deputy CoC	Chris Braun	403-880-7574	braunc@hotmail.ca
Chief Control Marshal	Cass Theunissen	403-477-2325	Volunteers@RockyMountainRally.com
Safety Officer	Wayne Mayall	403-333-6518	wrmayall@gmail.com
Chief Scrutineer	Mike Dyer	403-608-2155	mike.deb.dyer@gmail.com
Chief Radio Marshal	Gary Spicer	403-614-0933	spicergarry@gmail.com
Course Car Manager	Jorge Dascollas	403-870-2856	jdascollas@shaw.ca

CARS Officials

Senior Steward	Dave Sharp	780-993-8156	dave.sharp@shaw.ca
----------------	------------	--------------	--------------------

Covid-19

The Rocky Mountain Rally is prepared to adhere to any future changes in provincial guidance regarding COVID-19 precautions. We will also be adopting the recommendations from the Canadian Association of RallySport as we plan our event. Currently, regardless of provincial guidelines, our plan is:

- Post signage reminding participants and volunteers of the social distancing requirements.
- Use virtual meetings where possible
- Have volunteers work in independent 'pods' of no more than 10, and typically 6.
- Recommend face masks to be used where 2m separation is not possible
- Recommend the use of hand sanitizer and recommend increased hand washing and hygiene
- Reduce touch points and the passing back and forth of paper documents
- Adopt online tools for notice board and competitor inquiries and interaction with officials
- Provide enough space to allow social distancing where people are gathered

Communication

All event operations communications are on a HAM radio network using 146.850 (-600) as the repeater frequency, with 146.640 -600 T131.8 as a back-up repeater, and 146.550 as a simplex back-up frequency. During Saturday, event communications will be through a controlled radio network. ALL traffic will be directed through net-control with no direct station-to-station communications without approval from net-control.

Net Control is operated continuously by two radio operators working in tandem and in constant communication with one of the Clerk of the course or deputy clerks of the course.

Chain of Command

The clerk of the course is the ultimate authority during the event, but in the event of their absence, the priority of decision making authority is as follows.

- 1 Clerk of the Course
- 2 Deputy Clerk of the Course
- 3 Safety Officer
- 4 Senior Steward
- 5 Other Stewards
- 6 CRC Series Manager

Emergency Resources

First Aiders: The first resources in dealing with competitor injury are the competitors in the following cars. Every car is required to carry a first aid kit and CARS licensed competitors are required to have current emergency first aid certification.

Radio Network: The radio net is used to both identify missing vehicles and provide a communication point for teams requesting emergency help. This is the first source of good information on any incident out on the stages and is crucial in the process of sending in the right resources.

Electronic Vehicle Tracking: This event will be using the RallySafe vehicle tracking system that will show us when and where course cars and competitors stop during the event. The system also allows teams to send an SOS signal to indicate an urgent need for assistance.

Medical Sweep: Our Medical Sweep vehicles are staffed by Paramedics who have trauma bags with them and are able to stabilize injured participants until further resources arrive.

These vehicles will be staged at the start of stages while any car is actively competing.

Basic Life Support Ambulance: We will have two BLS ambulances that will be staged strategically throughout the event and equipped with a ham radio.

In the event of an incident requiring an ambulance, it would be deployed under the direction of the Clerk of the Course and accompanied by a heavy recovery vehicle.

Heavy Recovery: We have two heavy recovery vehicles that will be staged at the stage start and who will respond under the direction of the clerk of the course as needed.

Operations Basics

Stage preparation starts with a roll call of each radio location to ensure they are prepared for an active stage and confirming there are no problems at each location. This includes stage starts and finishes. Car 000 will likely be on stage as this is happening and in some cases may have completed the stage by this time.

Once all major locations are confirmed ready, 00 will enter the stage and perform its checks, stopping as needed to correct any issues that have come up since 000's passage of the stage. Once 00 has started the stage, no other vehicle traffic is allowed on the stage unless explicitly directed by the Clerk of the Course. On completing the stage, 00 will report their opinion of the stage to the Clerk of the Course, though Net Control and will provide the information to base opening the stage on.

0 will be sent into the stage approximately 15 minutes before the expected start of the stage. The 0 car is the final check of all safety precautions and while they are not expected to have to stop on stage, they MUST stop and fix any problems they find while checking out the course. 0 will report their opinion of the stage to the Clerk of the Course, though Net Control, and advise when they are comfortable allowing competitors to start the stage.

On the advice of the course cars and net control, if the Clerk of the Course is satisfied the stage is ready to run, he will advise the start control to start sending cars at the appropriate time.

Once the last car has started the stage, Sweep will follow the competitors and dealing with any cars that have stopped on stage.

Operations Exceptions

Split Opening: Because of the stage schedule and the mix of roads used, the course opening duties may occasionally be split between the course crews. In this case, two cars will each open portions of the stage – equalling the entire stage – in order to save time in a repeated use of part or all of the stage. For the first time use of a stage start and finish, Cars 00 and 0 are required to traverse the entire stage. Split openings can only be used after a stage has been used once and is confirmed to be operational.

Vehicle Tracking

This event will use both traditional vehicle tracking by radio blockers and GPS tracking through the RallySafe tracking system. The systems will be used in tandem as complementary to each other.

Radio Tracking: The rally uses ham radio blockers on all roads or significant trails in the event. On Saturday, the largest gap between radio operators is 2.8km. on Sunday the largest gap is 2.4km.

The Radio Net operations allow all blockers to track the start, passage, and finish of competitors and official vehicles through the following process:

- Before the stage is started all radio positions are confirmed ready through a roll call.
- All course cars and competitor cars are announced starting the stage by the stage start. The radio call would be the alpha designation for the control and the car number. (Alpha 1, for car 1 at the 'alpha' control)
- All mid-point blockers are expected to note the start time of cars as they are announced. They are provided tracking sheets that allow them to note the car numbers in running order and the times for start, passage, and finish.
- Mid-points blockers are asked to call in to net control if there is car missing from the order, or an unusual gap after the last car has passed them.
- On a report of a missing car, the Clerk of the Course will advise the medical and recovery assets at the stage start to get ready to enter the stage. A roll call of radio operators will be used to estimate the section of road the car has stopped in, and the cars arriving at the finish will be asked if they have seen the car.
- If the situation hasn't resolved itself by the time two cars after the missing car has finished, the clerk of the course will order the start to stop sending cars and will have the medical sweep and/or ambulance as well as 99 and/or Safety enter the stage to locate the missing car.
- The Clerk of the course will also ask all radio positions to stop any competing cars and instruct them to either transit the rest of the stage or to hold at the radio position, depending on locations and the situation.
- Radio Blockers may also pass on reports of red-cross situations from competitors. In this case they will get Net Control's attention with a "RED FLAG" call and wait for a response before delivering as much information as they can about the situation.
- When a Red Cross situation is being reported by a competing car, the Clerk of the course will instruct the stage start to stop sending competitors into the stage and will send in the appropriate responders.
- All emergency communications is handled through Net Control.

GPS Tracking: This will be using the RallySafe system, which has been used in the west in the past. This system provides regular updates on car location and speed as well as 'exception' reporting of cars coming to a stop. The information is displayed on a graphical interface and includes alarms for certain situations. Information from the tracking units will be used as part of the process of assessing the situation and sending in resources.

The implementation will be as follows:

- 00, 0, 99, and every competing car will be outfitted with a tracker
- Teams will be told that if they display a red cross, they should also press the SOS button if able to.
- Teams coming across a Red Cross Situation will be expected to stop and follow the CARS emergency procedures. If they agree it is a Red Cross situation that they should also press their SOS button. This will act as a confirmation that there is the need for emergency support. The next vehicle at the scene is to continue to the next radio point, with all relevant information available.
- When a car indicates it has stopped on stage, the radio net will advise all blockers that we are aware of the car being stopped. The rest of the procedure will follow as if a car had been reported missing by a blocker.
- If the car is displaying a hazard, the team will be sent a text message to their RallySafe unit asking if they are OK.
- When a car sends an SOS, emergency resources will be asked to get ready to enter the stage, but will not be sent in unless a second SOS is sent from that location. The team will also be sent a text message to the RallySafe unit asking to confirm the SOS. If the next competitor car continues on, they will be asked about the status of the stopped car at the finish control. Response will follow accordingly based on their observation. Each team finishing after will be asked about the stopped car(s.)
- Should a car go missing without being reported by tracking, it will be treated as a car reported missing by a blocker.

Safety Requirements

Waivers: All event volunteers, participants, officials, and accredited media will be required to sign a waiver in front of an event official and on doing so will be given a wrist band that must be worn for the duration of the event.

Identification: All event volunteers, participants, officials, and accredited media will be given ID badges that list their name and general category for their role at the event.

Restricted Area Identification: Any event volunteers, participants, officials, or accredited media with access to restricted areas will be required to wear a CARS vest at all times.

Emergency Information: As a part of registration for the event, volunteers and competitors were asked to voluntarily submit emergency contact information as well as advise about any allergies or medical information they may feel is relevant. This information will be consulted should there be an incident involving the person.

Media Access: Media requesting access to restricted areas MUST submit a satisfactory movement plan to the organisers before a CARS vest will be issued.

Volunteer Training: There will be volunteer training held on Wednesday night to review safety and operating procedures for all marshal captains. There will be an emphasis on personal safety and ensuring everyone is behaving safely at all times.

Stage Road Details

Maps showing the stages in detail are appended to this document.

Jumpingpound Demonstration Forest Loop (used for SS 3,4,7,8)

5.4 km long, 100% Gravel

Permissions through Environment and Parks, Mike Thompson.

5 Marshals plus one radio operator at each start and finish control, including captain.

3 Radio Blocker locations (see map for details)

Powderface Trail (used for SS 5,6,7,8)

34 km long, 100% Gravel, used in both directions.

Used in RMR12. North 24km of the road has been used in the Kananaskis rally for over 20 years.

Permissions through Alberta Transportation.

5 Marshals plus one radio operator at each start and finish control, including captain.

5 Marshals plus one radio operator at main spectator area

1 Marshal plus one radio operator and one course car crew at unofficial spectator area

15 Potential Radio Blocker locations (see map for details)

Emergency Plan Details

Emergency Resource Staging: The event's emergency resources will be staged in locations where they will have immediate, unblocked, access to the start of the stage. The layout of the stages uses the same start-line in each section of stages, but has the competitors turning different directions at a central junction. The primary resources will be positioned as follows.

- **BLS Ambulance:** Always at the start of a stage road.
- **Medical Sweep:** Always travelling in tandem with 99, and occasionally placed in the middle of long stages more immediate response.

Emergency Communications: All requests for additional resources in the event of a serious incident will be handled through Net Control. Local emergency services are contacted and dispatched through the 911 call centre. Net Control will be operating in an area with solid cellular coverage as well as land-line phones.

Meeting Points: If additional resources are requested, The Safety officer – or their designate – will connect with those resources at a predetermined location and guide them to the incident scene. The meeting locations are as follows:

South Half of Powderface Trail: 'Alpha' Hwy 66 and Elbow falls. 50.805046, -114.842349

North Half of Powderface Trail: 'Delta' Hwy 68 and Powderface, 51.03807, -114.86803

Jumpingpound Demonstration Forest: 'Foxtrot' Hwy 68 and North Loop, 51.04910, -114.80900

Transportation to Medical Facilities: The closest emergency room is at the Foothills Medica Centre. Transportation will be coordinated with the 911 call centre, and the event will register with STARS in the event an air ambulance is required.

Public/Media Communications: If there is a serious incident during the event, ONLY the Clerk of the Course, or their designate, will make public statements.

Appendix 1 - Stage Schedule

RMR 2021 Schedule

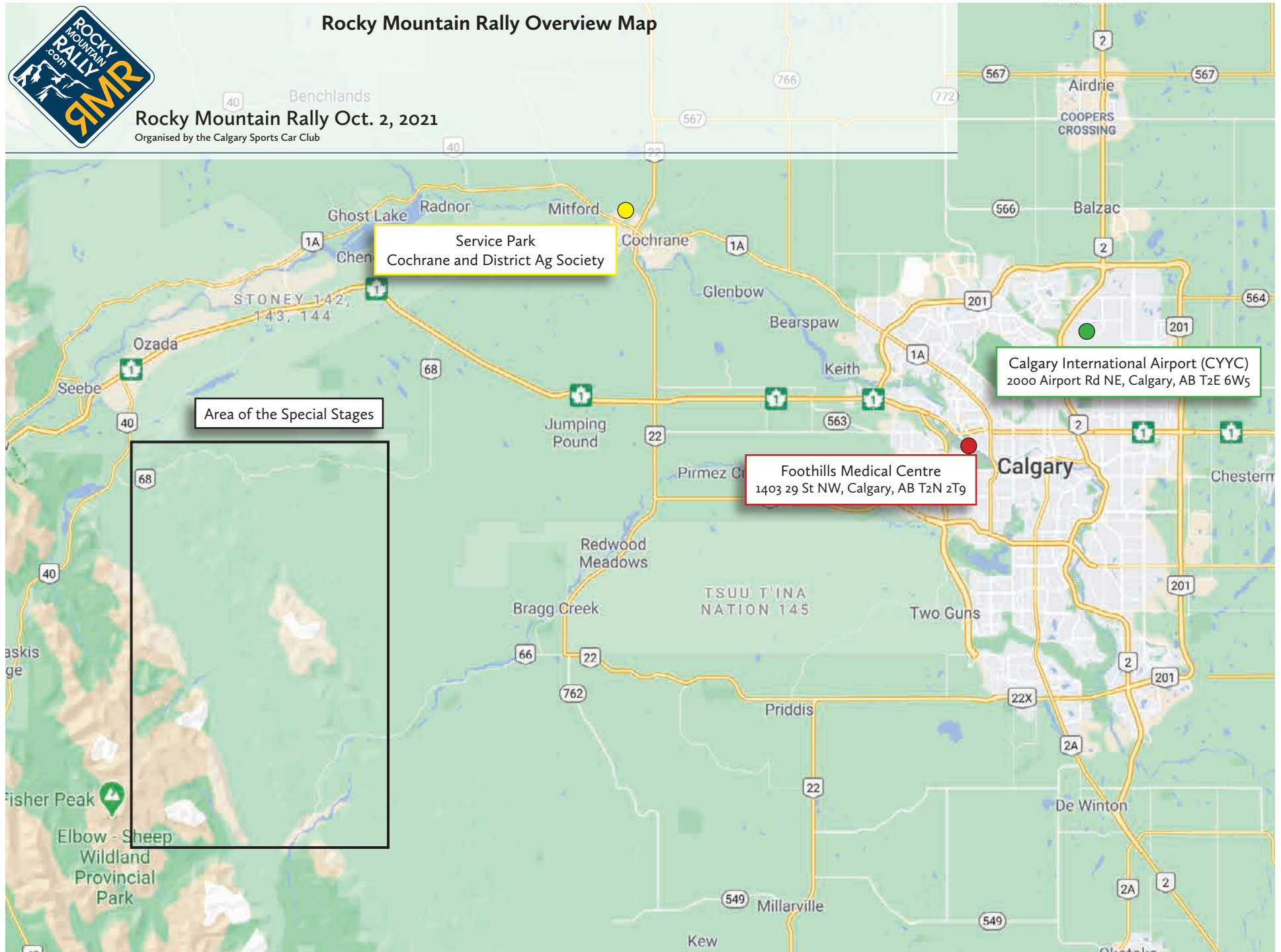
Section		Transit Distance	Stage Distance	Target Time	First Car Due
RZ 0	Distance to next refuel	73.58	35.69	45.16 L	
MTC 0	Start National and Regional 1	63.20		0:55	8:30
ATC 1				0:02	9:25
SS 1	Powder Up 1		5.64	0:06	9:27
FTC 1	Transit to SS 2	3.83		0:20	9:33
ATC 2				0:02	9:53
SS 2	Face Up 1		24.69	0:20	9:55
FTC 2	Transit to SS 3	5.00		0:10	10:15
ATC 3				0:02	10:25
SS 3	Loop 1		5.36	0:05	10:27
FTC 3	Transit to Remote Service 1	1.55		0:10	10:32
TC 3A	Remote Service 1 In				10:42
Remote Service 1				0:15	
TC 3B	Remote Service Out	2.80		0:20	10:57
RZ 1	Refuel Zone: Distance to next refuel	71.55	39.52	47.53 L	
ATC 4				0:02	11:17
SS 4	Loop 2		5.36	0:05	11:19
FTC 4	Transit to SS 5	5.75		0:10	11:24
ATC 5				0:02	11:34
SS 5	Powderface Down 1		34.16	0:28	11:36
FTC 5	Transit to Service	63.00		0:55	12:04
TC 5a	Service 1 In (End of Regional 1)				12:59
Service 1				0:45	
Regional 1 Transit		145.13	65.9%		
Regional 1 Stage		75.21	34.1%		
Regional 1 Total		220.34			
TC 5b	Service Out ReSeed in (Start Regional 2)			0:15	13:44
TC 5c	Regroup out	63.20		0:55	13:59
RZ 3	Refuel Zone: Distance to next refuel	71.55	39.52	47.53 L	
ATC 6				0:02	14:54
SS 6	Powderface Up 2		34.16	0:28	14:56
FTC 6	Transit to SS 7	5.85		0:10	15:24
ATC 7				0:02	15:34
SS 7	Loop Reverse 1		5.36	0:05	15:36
FTC 7	Transit to Remote Service 2	2.50		0:10	15:41
TC 7a	Remote Service 2 In				15:51
Remote Service 2				0:15	
TC 7b	Remote Service Out	1.70		0:20	16:06
RZ 4	Refuel Zone: Distance to next refuel	4.50	5.36	5.15 L	
ATC 8				0:02	16:26
SS 8	Loop Reverse 2		5.36	0:05	16:28
FTC 8	Transit to Remote Fuel (time includes trans	2.80		0:20	16:33
RZ 4	Refuel Zone: Distance to next refuel	17.70	68.32	55.67 L	
	Transit to SS 9	7.10			
ATC 9				0:02	16:53
SS 9	Powderface Down 2		34.16	0:28	16:55
FTC 9	Turn-around	3.10		1:00	17:23
SS 10	Powderface Up 3		34.16	0:28	18:23
FTC 10	Transit to Remote Fuel	7.50		0:55	18:51
RZ 5	Refuel Zone: Distance to next refuel	51.00	0.00	12.75 L	
	Transit to Finish	51.00			19:46
Regional 2 Transit		144.75	56.1%		
Regional 2 Stage		113.20	43.9%		
Regional 2 Total		257.95			
National Transit		289.88	60.6%		
National Stage		188.41	39.4%		
National Total		478.29			

Fuel calculation based on .25l/km on transit and .75l/km on stage



Rocky Mountain Rally Overview Map

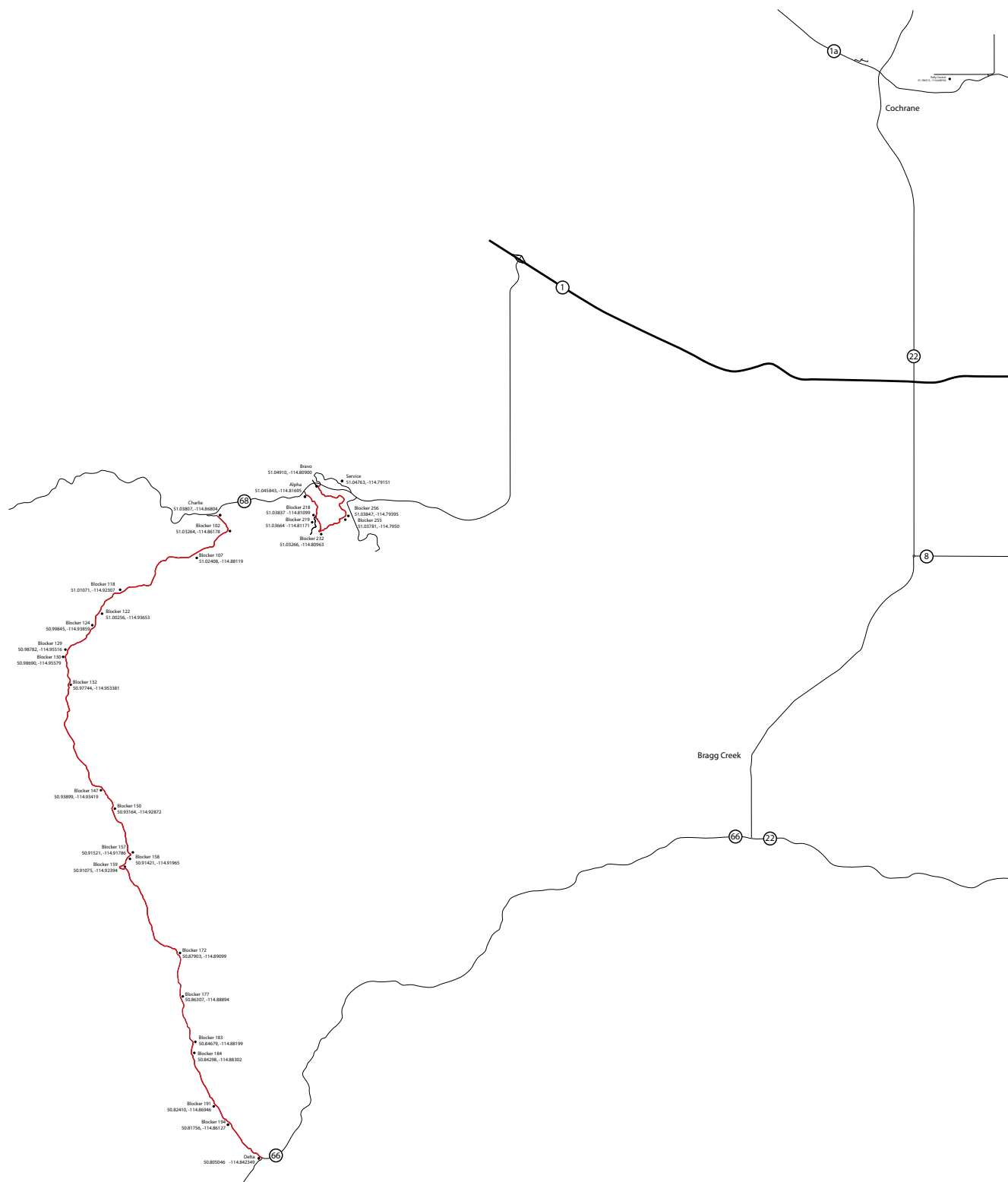
Rocky Mountain Rally Oct. 2, 2021
Organised by the Calgary Sports Car Club





Overview Map

Rocky Mountain Rally Oct. 2, 2021
Organised by the Calgary Sports Car Club





SS 1 - Powder Up - 5.64 km

Alpha (5 plus 1 radio) to Bravo (3 plus 1 radio)

Minimum 2 Radio Blockers, 3 potential Blockers

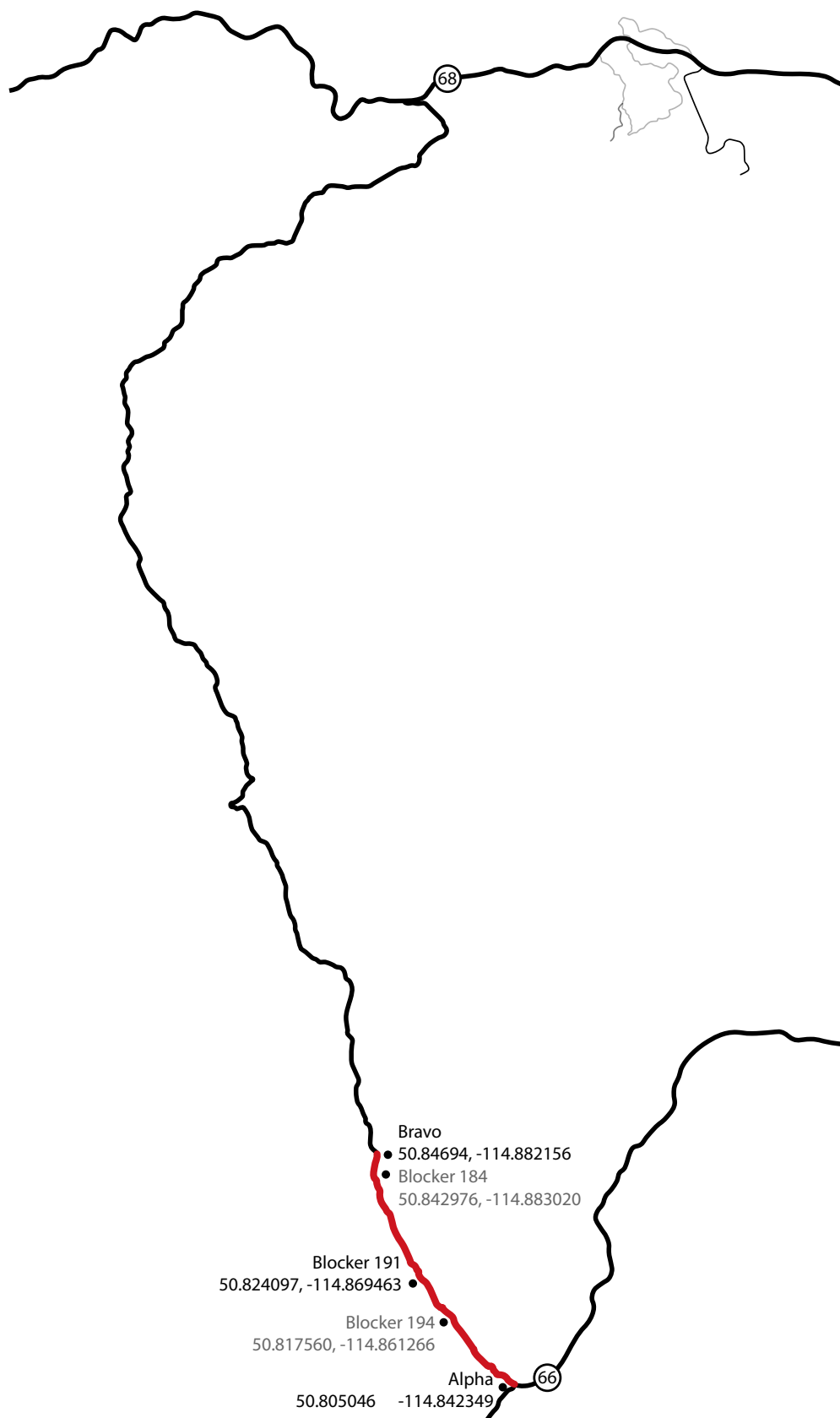
0830h Road Closure

0927h SS 1 First Car Due

1013h SS 1 Car 35 end

Rocky Mountain Rally Oct. 2, 2021

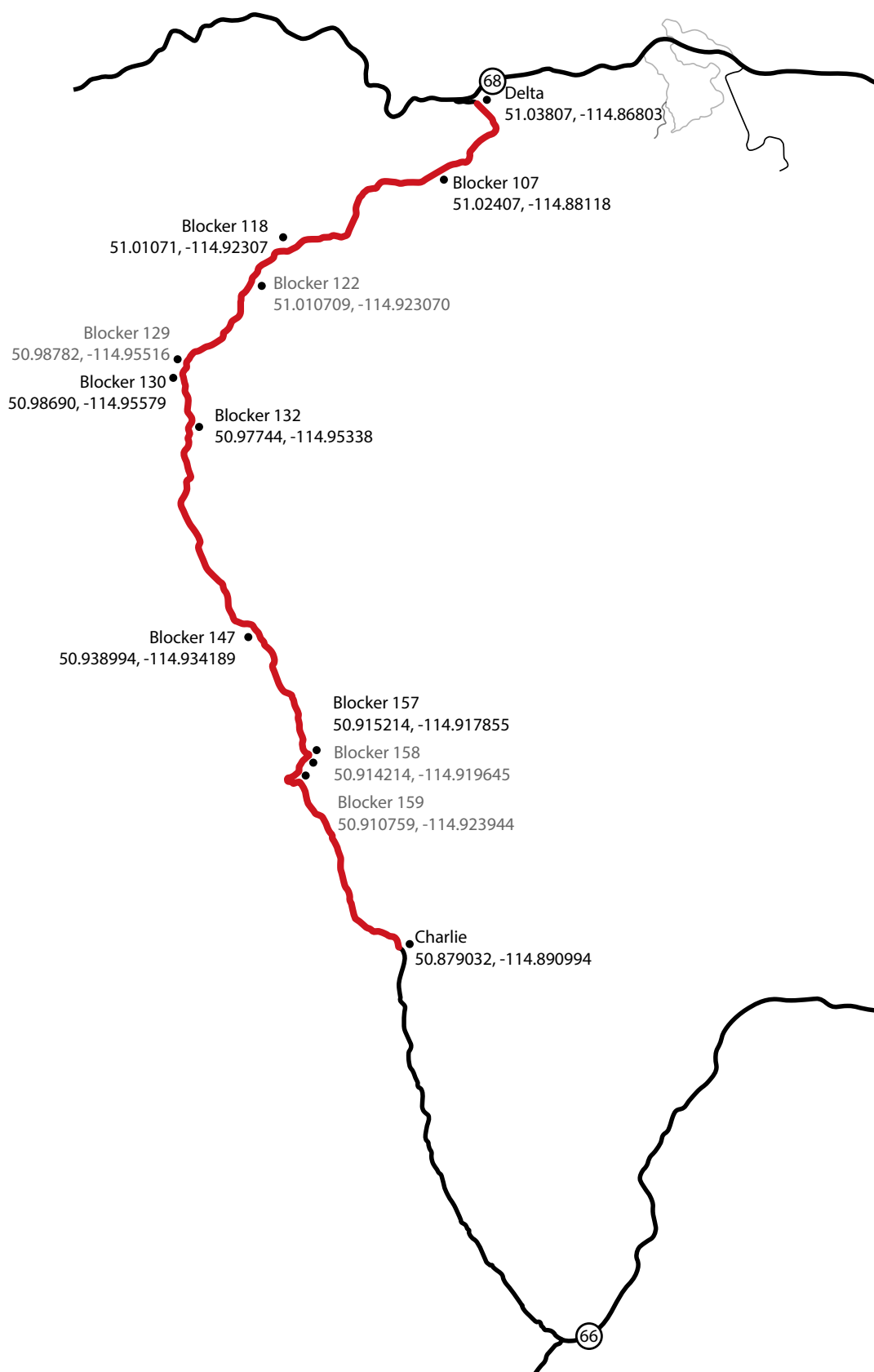
Organised by the Calgary Sports Car Club





Charlie (3 plus 1 radio) to Delta (5 plus 1 radio)
Minimum 5 Radio Blocker, 10 potential Blockers

0830h	Road Closure
0955	SS 2 First Car Due
1055h	SS 2 Car 35 end
1100h	Road Opens





SS 3 and 4 - Loop - 5.36 km

Alpha (5 plus 1 radio) to Bravo (5 plus 1 radio)

4 Radio Blockers

Rocky Mountain Rally Oct. 2, 2021

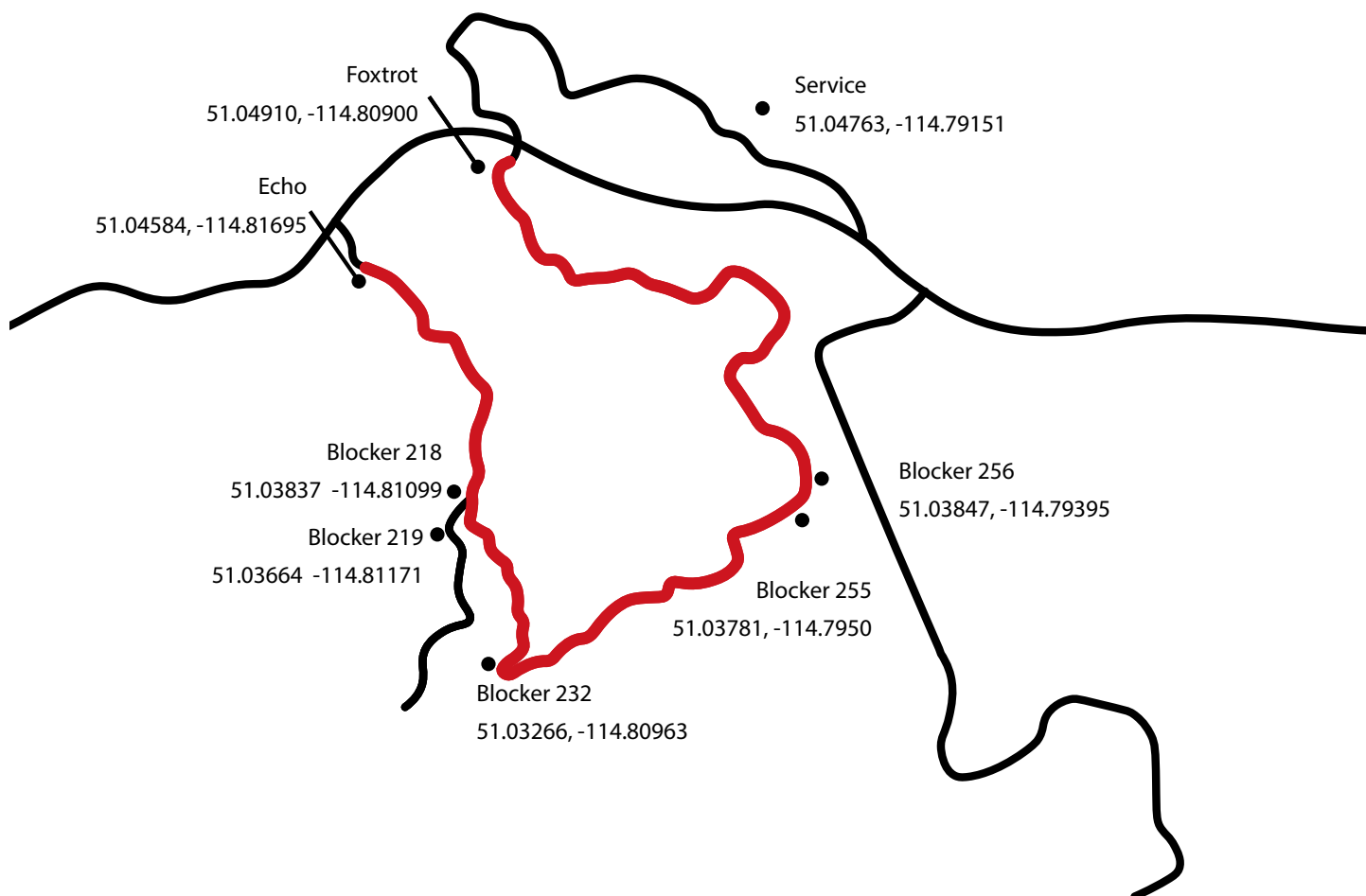
Organised by the Calgary Sports Car Club

0945h Road Closure

1027h SS 3 First Car Due

1204h SS 4 Car 35 end

1230h Road Opens





SS 5 and 9 - Powderface Down 1 - 34.10 km

Delta (5 plus 1 radio) to Alpha (5 plus 1 radio)

Minimum 9 Radio Blocker, 19 potential Blockers

Rocky Mountain Rally Oct. 2, 2021

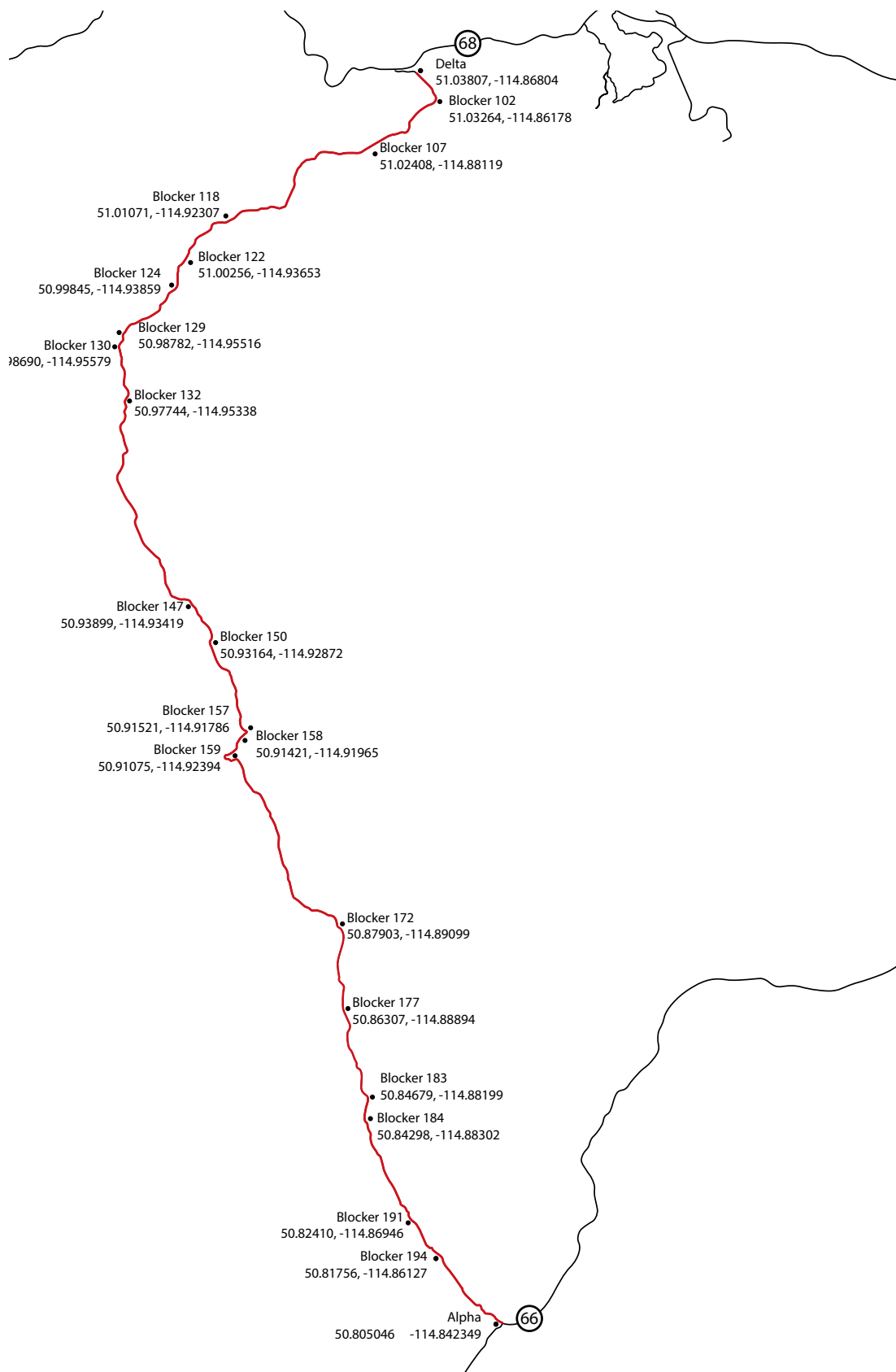
Organised by the Calgary Sports Car Club

1100h Road Closure

1136 / 1655h SS 5 / 9 First Car Due

1244h / 1803h SS 5 / 9 Car 35 end

1300h / 1945h Road Opens





SS 6, 10 - Powderface Up 1

Alpha (5 plus 1 radio) to Delta (5 plus 1 radio)
Minimum 9 Radio Blocker, 19 potential Blockers

33.91 km -Alpha to Delta

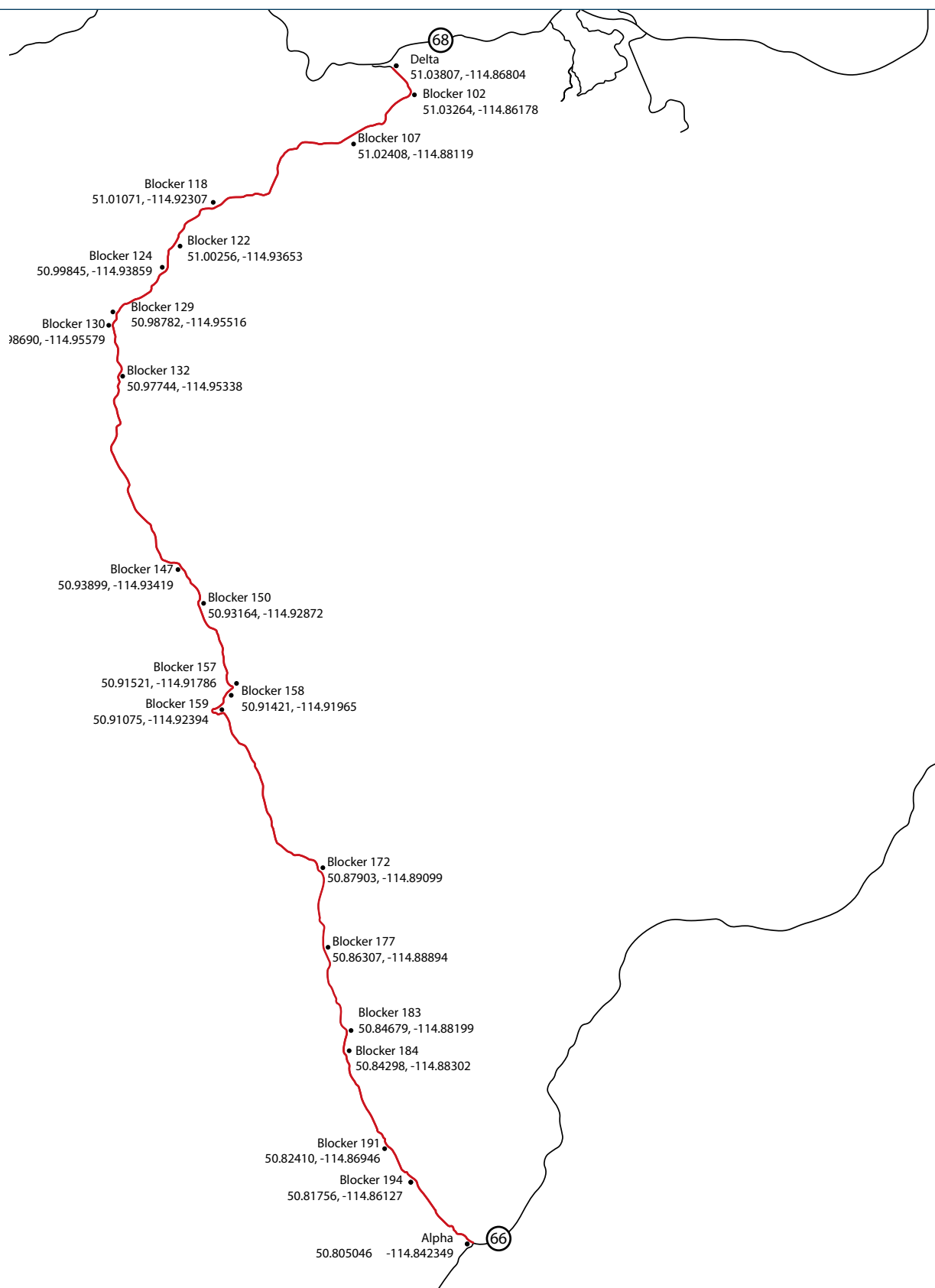
1400h Road Closure

1456h / 1823h SS 6 /10 First Car Due
1604 / 1931h SS 6 /10 Car 35 end

1945h Road Opens

Rocky Mountain Rally Oct. 2, 2021

Organised by the Calgary Sports Car Club





SS 7 and 8 - Loop Reverse

Foxtrot (5 plus 1 radio) to Echo (5 plus 1 radio)

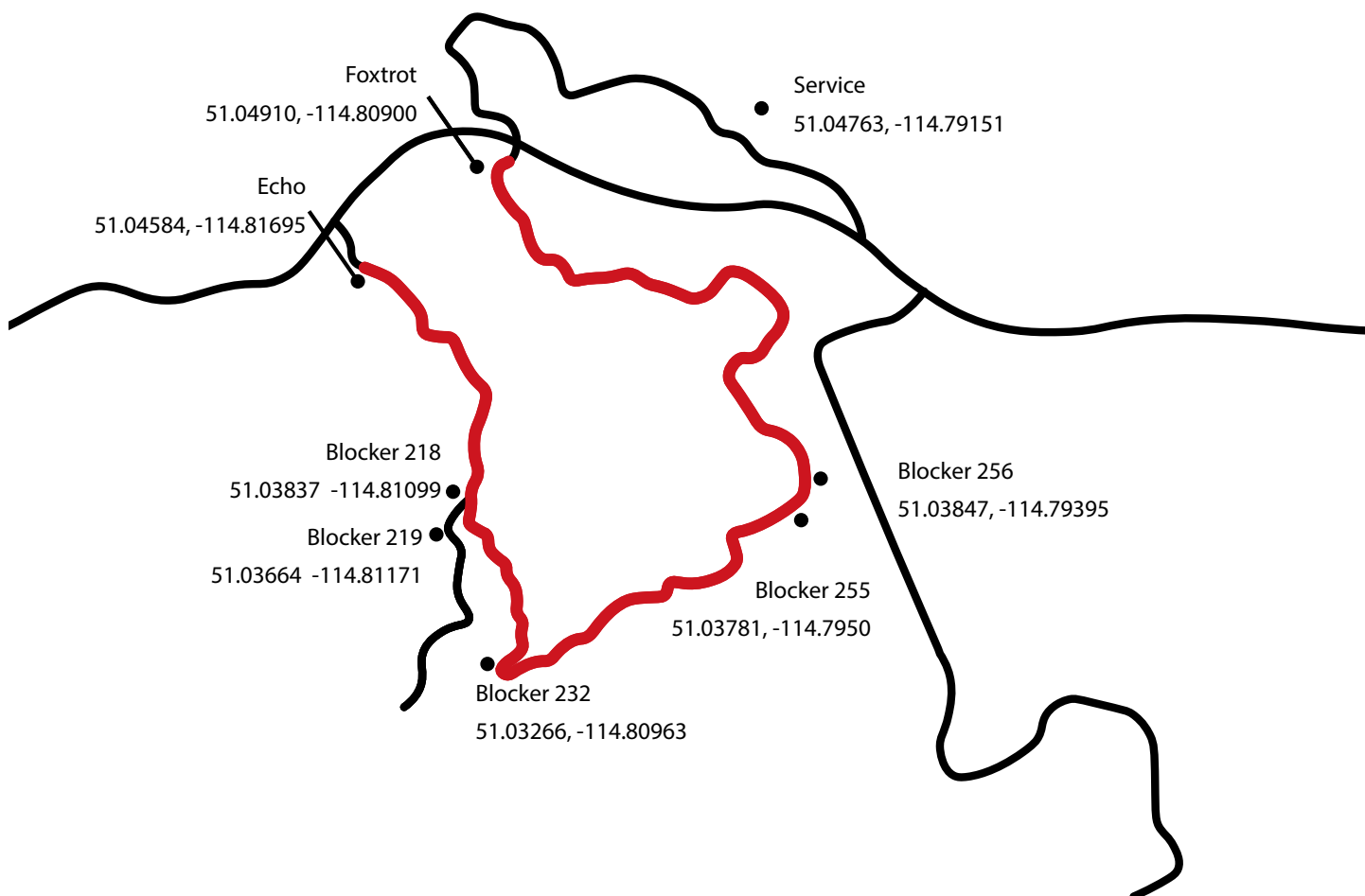
4 Radio Blockers

Rocky Mountain Rally Oct. 2, 2021

Organised by the Calgary Sports Car Club

5.39 km - Foxtrot to Echo

1445h Road Closure
1535h SS 7 First Car Due
1713h SS 8 Car 35 end
1730h Road Opens



GOVERNMENT OF ALBERTA
ALBERTA TRANSPORTATION
2021 ROCKY MOUNTAIN RALLY
POWDERFACE TRAIL HIGHWAY CLOSURE ORDER

I, DARREN DAVIDSON, Regional Director of the Southern Region of Alberta Transportation, pursuant to Section 41(1) of the Highway Development and Protection Act, make the Order, being the 2021 Rocky Mountain Rally Highway Closure Order.

This Order shall cover:

All that portion of Powderface Trail, from Highway 68 to Highway 66, on Saturday, October 2, 2021, from 8:00 AM to 8:00 PM as shown on Appendix "A".

DATED at Lethbridge, Alberta this 14 day of September, 2021



DARREN DAVIDSON
Regional Director
Alberta Transportation